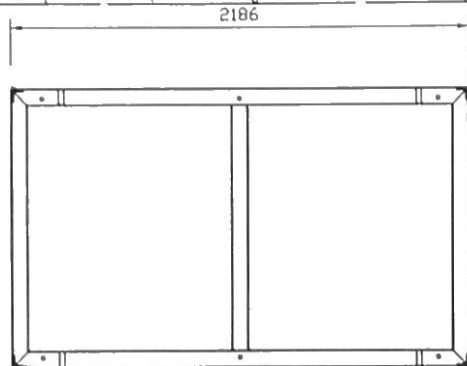
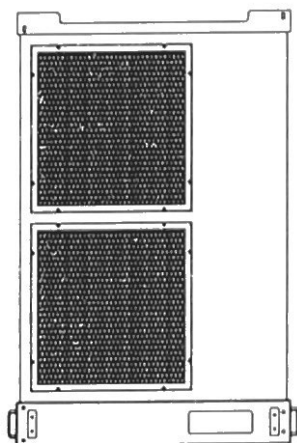


NOTES

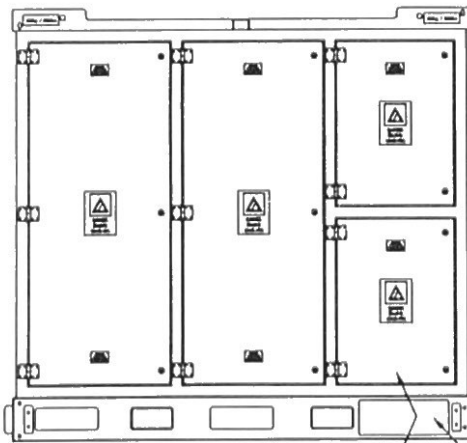
1. APPROXIMATE WEIGHT: 1240kg. / 2750lbs
2. PAINT FINISH: RAL9016 (WHITE).
3. NO OBSTRUCTION PERMITTED WITHIN 1m ON AIR INLET & OUTLET GRILLES.
4. 1m CLEARANCE REQUIRED FOR MAINTENANCE ON CONTROL SIDE. AIR OUTLET



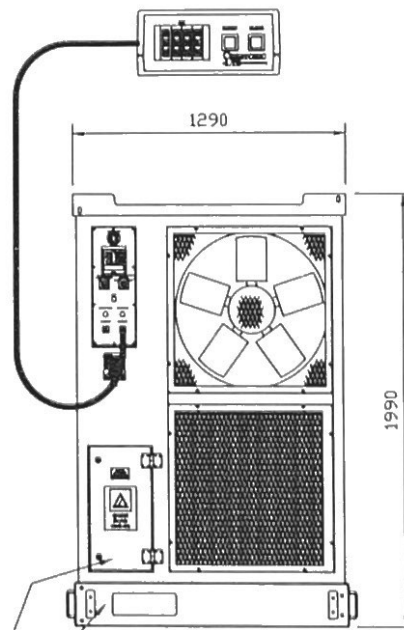
PLAN VIEW



END VIEW



SIDE VIEW



FRONT VIEW

CABLE ACCESS PANEL
CABLE ENTRY



Crestchic Loadbanks
2nd Avenue, Centrum 100, Buren-on-frent,
Staffordshire, DE14 2WF, United Kingdom.
TEL +44 (0)1283 631645 FAX: +44 (0)1283 510103
Crestchic Loadbanks
WORLDWIDE LOADBANK SPECIALISTS

This Drawing is the property of Crestchic Ltd and may not be copied, or used for any purpose other than that for which it is supplied. Contravention will be prosecuted copyright © 2013 Crestchic Ltd.

CUSTOMER
CRESTCHIC - USA

TITLE
GENERAL ARRANGEMENT 1000kW
480V, 60Hz, 3-PHASE, 3/4-WIRE
FORK LIFT BASE KCS100H LOADBANK

DRAWN BY
Garry Chamberlain 16/08/13

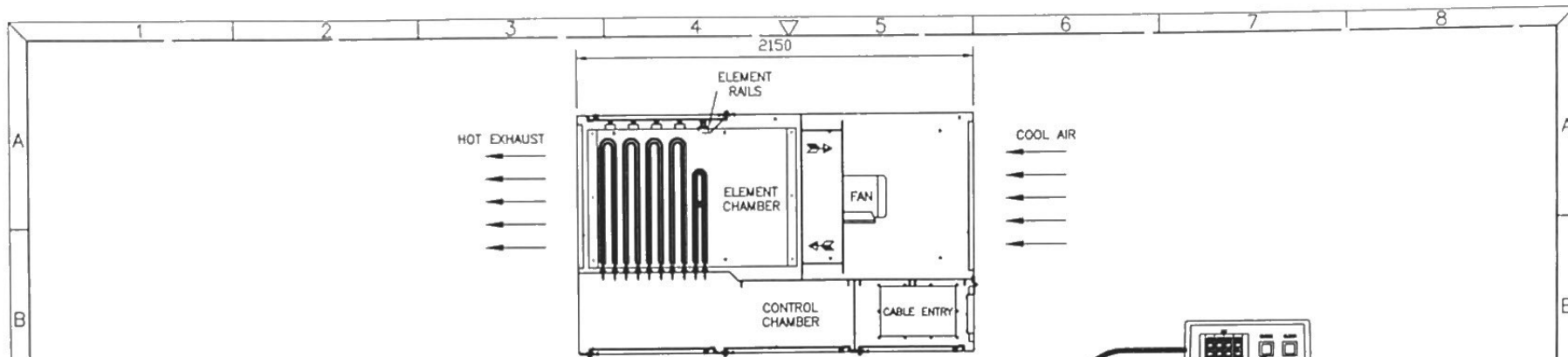
CHECKED
Michael Pendington 16/08/13

CONTRACT
C4928 DNS

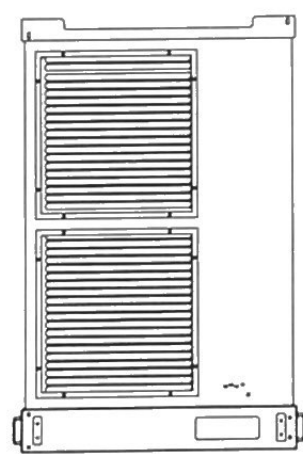
ISSUE	DATE	CHK'D	CHANGE No.	DESCRIPTION
1				1 of 5

DRG. No.
CL16426

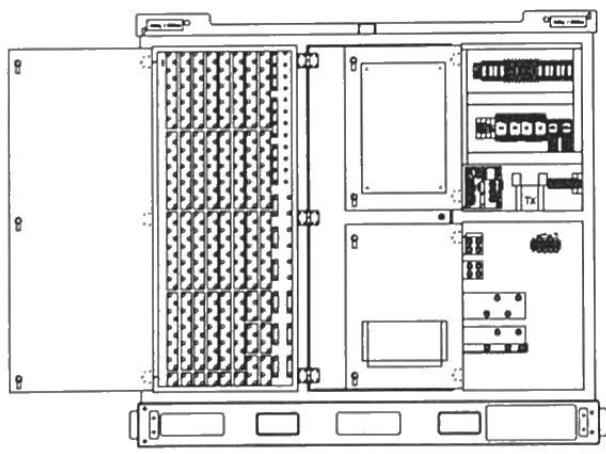
SHEET No.
A
3



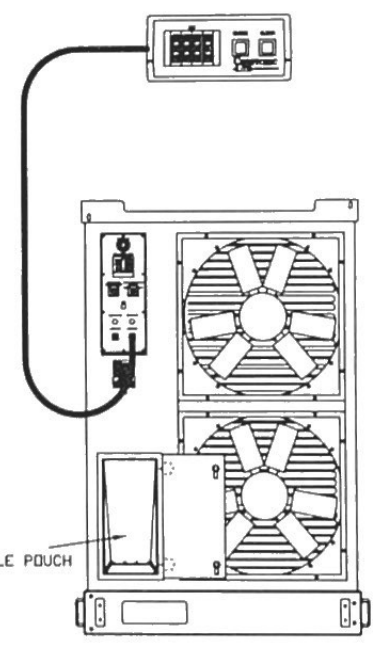
SECTIONAL PLAN VIEW



EXHAUST VIEW
GRILLE'S REMOVED



SIDE VIEW
DOORS OPEN



INLET VIEW
GRILLE'S REMOVED



Crestchic Loadbanks
2nd Avenue, Centrum 100, Burton-on-Trent,
Staffordshire, DE14 2WF, United Kingdom.
TEL: +44 (0)1283 531645 FAX: +44 (0)1283 510103
Crestchic Loadbanks
WORLDWIDE LOADBANK SPECIALISTS

This Drawing is the property of Crestchic Ltd and may not be copied, or used for any purpose other than that for which it is supplied. Contravention will be prosecuted copyright © 2013 Crestchic Ltd.

CUSTOMER
CRESTCHIC - USA

TITLE
GENERAL ARRANGEMENT 1000kW
480V, 60Hz, 3-PHASE, 3/4-WIRE
FORK LIFT BASE KCS100H LOADBANK

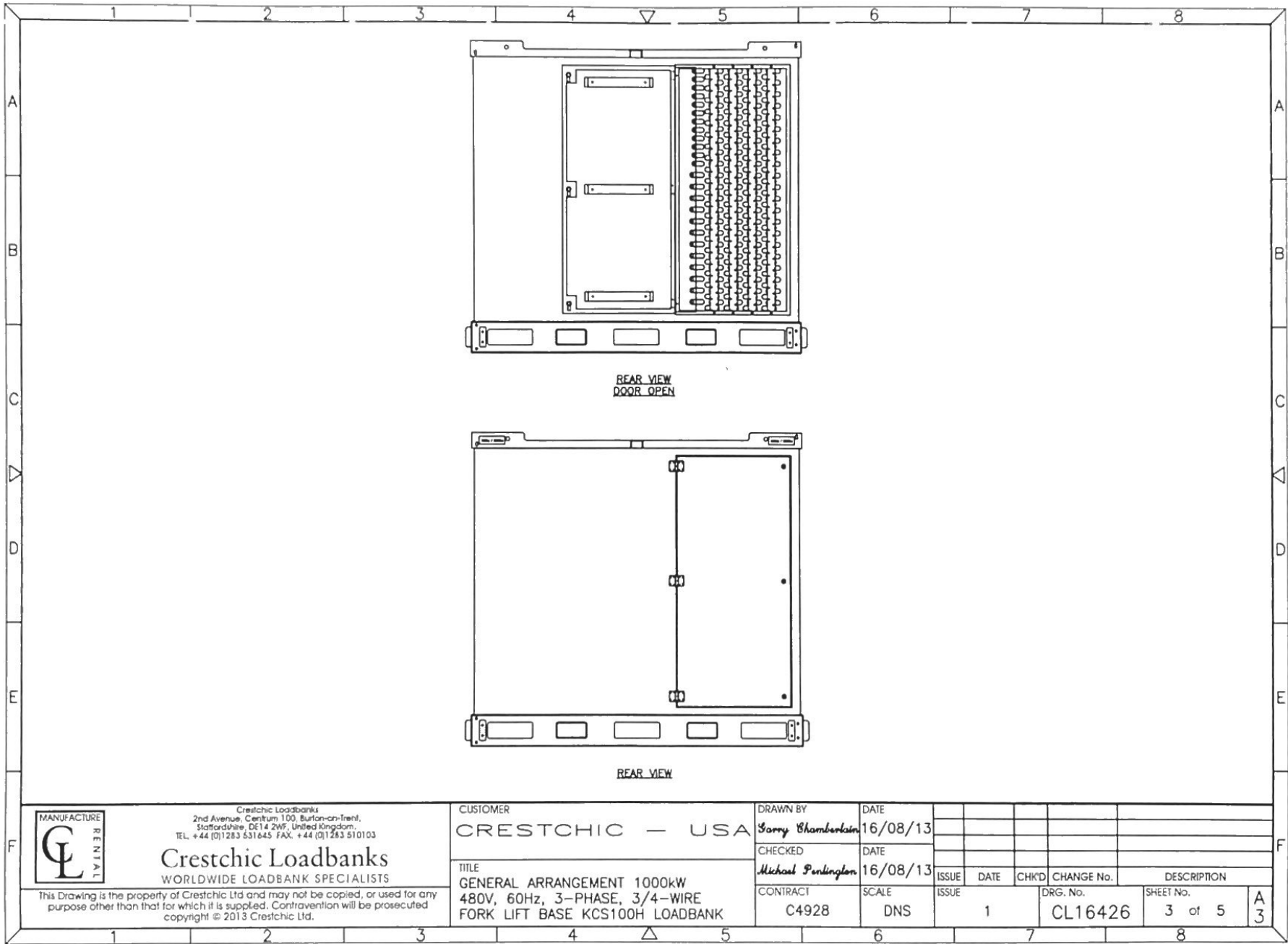
DRAWN BY
Garry Chamberlain 16/08/13

CHECKED
Michael Penlington 16/08/13

CONTRACT
C4928 SCALE
DNS

ISSUE	DATE	CHK'D	CHANGE No.	DESCRIPTION
1			CL16426	2 of 5

A
3



REAR VIEW
DOOR OPEN

REAR VIEW



Crestchic Loadbanks
2nd Avenue, Centrum 100, Burton-on-Trent,
Staffordshire, DE14 2WF, United Kingdom.
TEL: +44 (0)1283 531645 FAX: +44 (0)1283 510103
Crestchic Loadbanks
WORLDWIDE LOADBANK SPECIALISTS

This Drawing is the property of Crestchic Ltd and may not be copied, or used for any purpose other than that for which it is supplied. Contravention will be prosecuted copyright © 2013 Crestchic Ltd.

CUSTOMER
CRESTCHIC - USA

TITLE
**GENERAL ARRANGEMENT 1000kW
480V, 60Hz, 3-PHASE, 3/4-WIRE
FORK LIFT BASE KCS100H LOADBANK**

DRAWN BY
Sally Chamberlain 16/08/13

CHECKED
Michael Penlington 16/08/13

CONTRACT
C4928

DATE
16/08/13

DATE
16/08/13

SCALE
DNS

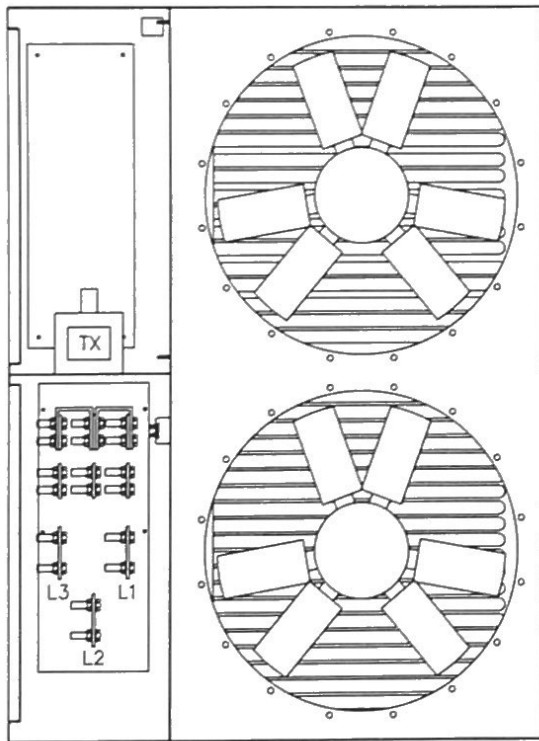
ISSUE	DATE	CHKD	CHANGE No.	DESCRIPTION
1				

ISSUE 1

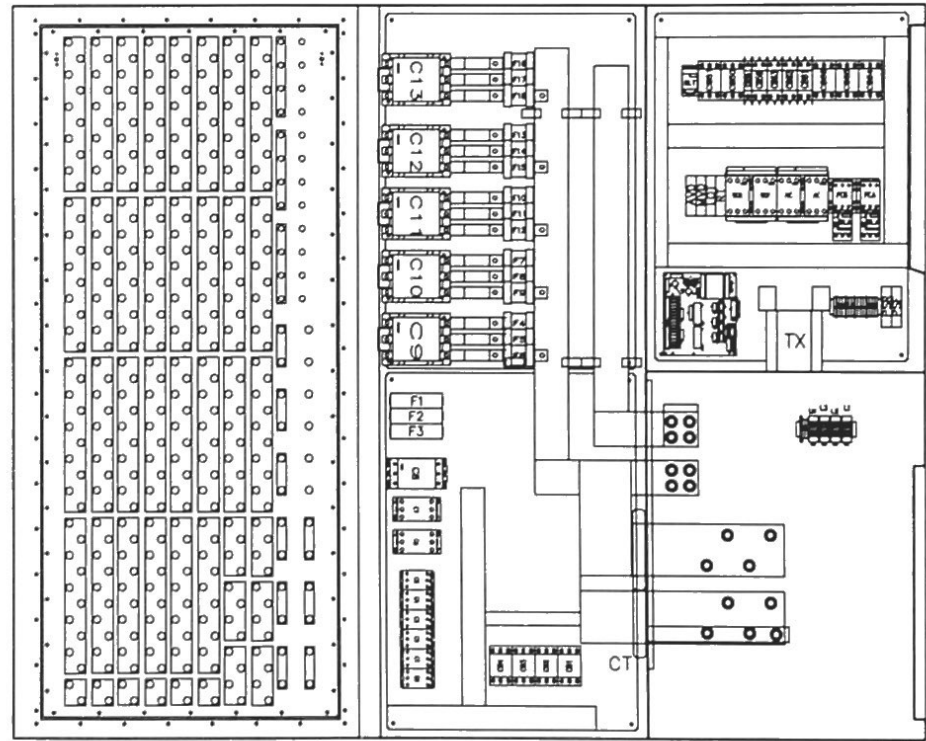
DRG. No. CL16426

SHEET No. 3 of 5

A
3



SECTIONAL INLET VIEW



SECTIONAL SIDE VIEW



Crestchic Loadbanks
 2nd Avenue, Centrum 100, Burton-on-Trent,
 Staffordshire, DE14 2WF, United Kingdom.
 TEL: +44 (0)1283 531645 FAX: +44 (0)1283 510103
Crestchic Loadbanks
 WORLDWIDE LOADBANK SPECIALISTS

This Drawing is the property of Crestchic Ltd and may not be copied, or used for any purpose other than that for which it is supplied. Contravention will be prosecuted copyright © 2013 Crestchic Ltd.

CUSTOMER
CRESTCHIC - USA

TITLE
 GENERAL ARRANGEMENT 1000KW
 480V, 60Hz, 3-PHASE, 3/4-WIRE
 FORK LIFT BASE KCS100H LOADBANK

DRAWN BY
Sorry Chamberlain 16/08/13

CHECKED
Michael Penlington 16/08/13

CONTRACT
 C4928

DATE
 16/08/13

DATE
 16/08/13

SCALE
 DNS

ISSUE	DATE	CHKD	CHANGE No.	DESCRIPTION
1				

DRG. No. **CL16426**
 SHEET No. **4 of 5**

A
3



Crestchic Loadbanks
WORLDWIDE LOADBANK SPECIALISTS

Crestchic Loadbanks
2nd Avenue, Centum 100, Burton-on-Trent,
Staffordshire, DE14 2WF, United Kingdom.
TEL +44 (0)1283 531645 FAX +44 (0)1283 510103

This Drawing is the property of Crestchic Ltd and may not be copied, or used for any purpose other than that for which it is supplied. Contravention will be prosecuted.
copyright © 2013 Crestchic Ltd.

CUSTOMER
CRESTCHIC - USA
TITLE
GENERAL ARRANGEMENT 1000kW
FORK LIFT BASE KCS100H LOADBANK

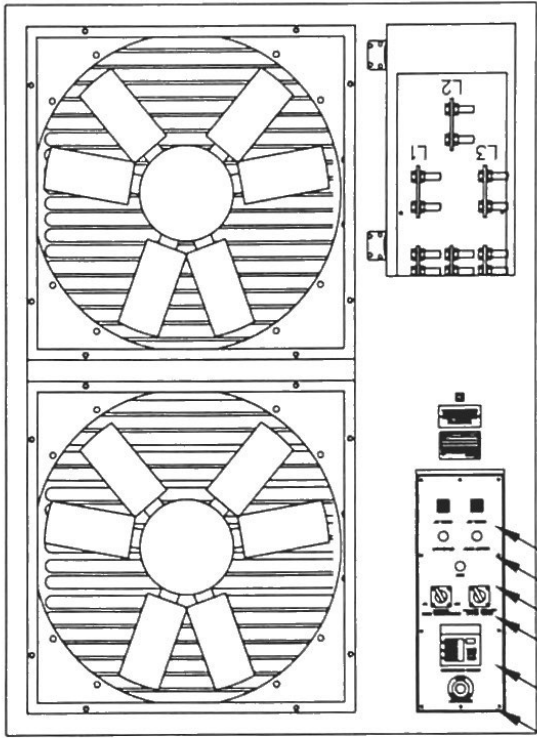
CONTRACT
C4928
SCALE
DNS

ISSUE
1
DATE
16/08/13

DRG. No.
CL16426
CHANGE No.
5 of 5

SHEET No.
5 of 5
DESCRIPTION
A

INLET VIEW
DOOR REMOVED



EMERGENCY STOP
POWER METER
CONTROL SUPPLY SWITCHES
RESET BUTTON
AUXILIARY SUPPLY LIVE / COOLING FAULT
KCS INPUT / OUTPUT

